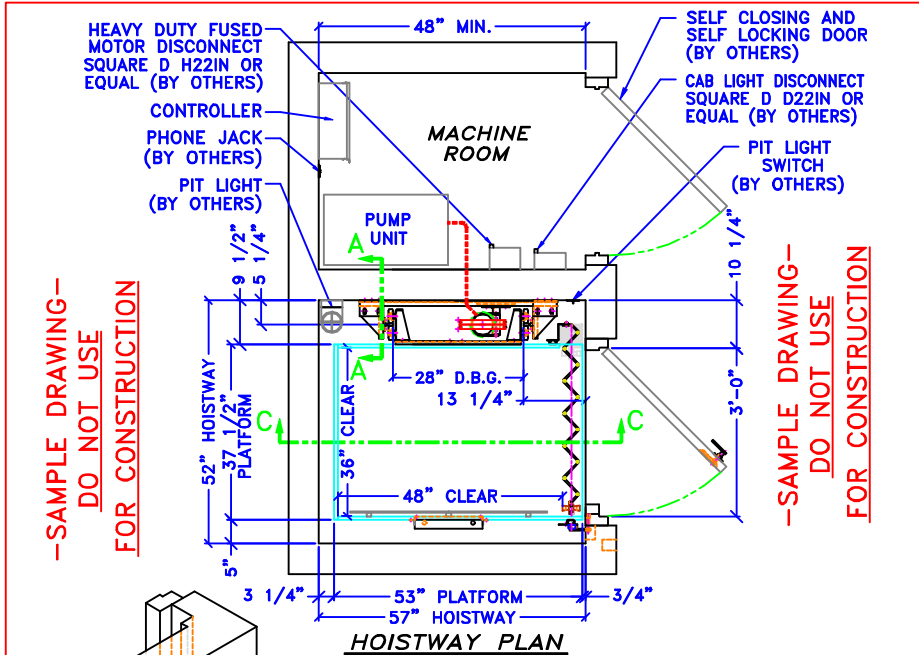


WORK BY OTHERS

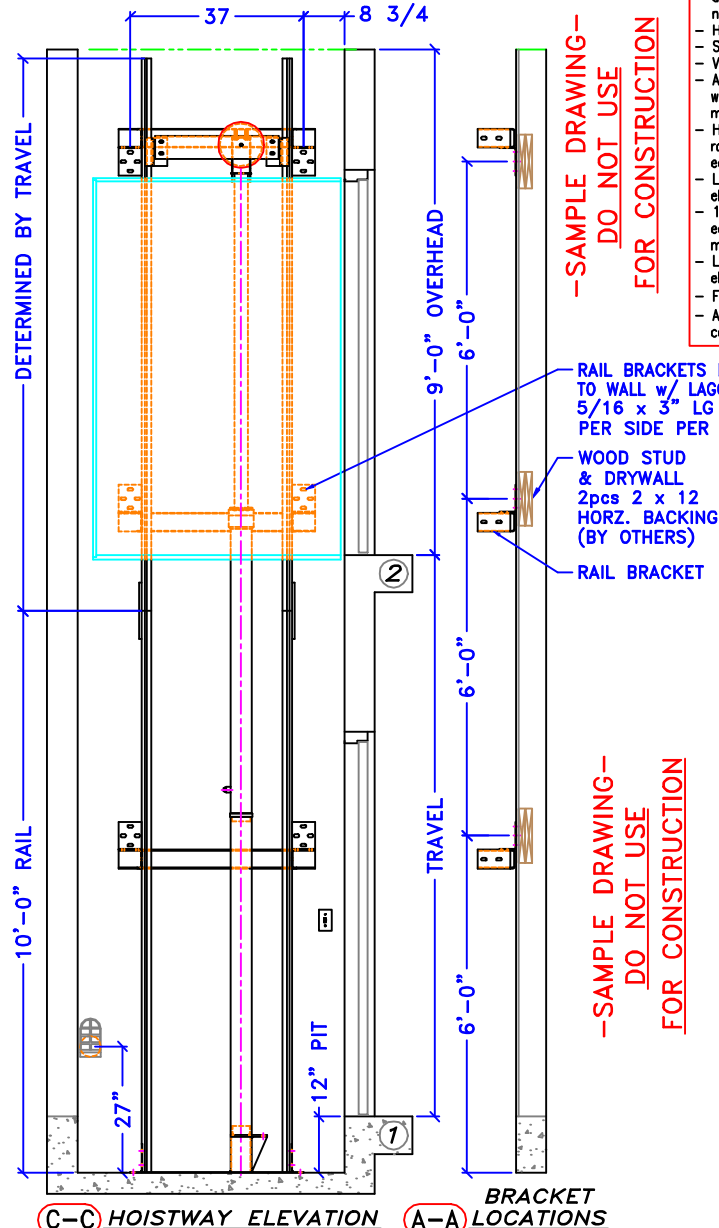
- TO BE PROVIDED BY OWNER AND/OR GENERAL CONTRACTOR:**
- Legal hoistway of proper size, plumb within 1" per 100', and pit of proper depth.
 - A 12" square blockout in elevator pit floor, to be filled when plunger assembly has been installed.(X3)
 - 10" PVC cylinder casing per drawings.(X3)
 - Suitable machine room with legal access & clearances, properly heated & ventilated. Temperature not to exceed 35°C(95°F).
 - Hoistway guard & barricades during installation.
 - Supports for rail fastenings where specified.
 - Venting of hoistways as required by code.
 - All cutting of walls, floors, of partitions together with all repairs, grouting, patching, and painting made necessary by such cutting or changes.
 - Heavy duty fused main line switch in machine room for each elevator with feeders connected to each controller.
 - Lights, light switch, and convenience outlets in elevator machine room.
 - 120V/1Ø/20amp service & telephone outlet for each elevator connected to controller(s) in elevator machine room for car lights & accessories.
 - Light, light switch, and convenience outlet in elevator pit where required.
 - Finished cab floor coverings.
 - All other equipment necessary & not otherwise called for in elevator contract.

NOTE:
 PROVIDE WALL CONSTRUCTION SUITABLE FOR ATTACHMENT OF RAIL BRACKETS MIN. DOUBLED 2 x 12 x (THE FULL WIDTH OF HOISTWAY) AT ELEVATIONS SHOWN. WALL CONSTRUCTION @ EACH POINT MUST BE CAPABLE OF 300# PULLOUT LOADING w/ MAXIMUM DEFLECTION OF 1/8"



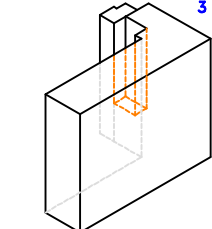
-SAMPLE DRAWING-
DO NOT USE
FOR CONSTRUCTION

-SAMPLE DRAWING-
DO NOT USE
FOR CONSTRUCTION

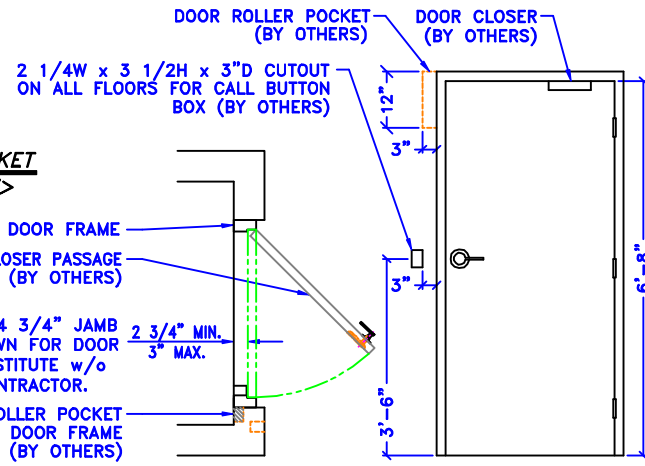


-SAMPLE DRAWING-
DO NOT USE
FOR CONSTRUCTION

-SAMPLE DRAWING-
DO NOT USE
FOR CONSTRUCTION



DOOR ROLLER POCKET
 <ISOMETRIC VIEW>



DOOR FRAME DETAIL **DOOR ELEVATION**

TIGER LIFT			
MODEL	XS	SERVICE	BFID
SPEED	28 FPM	CAPACITY	700
TRAVEL	VERIFY	OPERATION	SPBA
NO. LANDINGS	2	NO. CAR GATES	1
CAB TYPE	STD	CAB COLOR	?
HANDRAIL TYPE	ALUMINUM	CEILING COLOR	WHITE
GATE TYPE	WOODFOLD	GATE FINISH	OKM VINYL
GATE OPERATION	MANUAL	GATE SIZE	36"(R)
FLOOR DESIGNATION	1, 2	FIXTURE FINISH	S.S.#4
ILLUMINATE	X	EMERG. LIGHT	MICROPRO.
SCREW PUMP		AUTO LIGHT	RET. CAM
FIRE SERVICE		RUPTURE VALVE	IN USE LT
KEY SW/MOMENT		AUTO LOWER	TANK HT.
ARRIVAL LIGHT		KEY SW/MAINT	AUTO DOOR
ARRIVAL GONG		CAR TOP STATION	AUTO GATE
DOOR MONITOR		POSITION IND.	SOFTWARE
HARDWARE		PHONE BOX	PHONE
CAR WEIGHT	-	GROSS WEIGHT	-
RAIL SIZE	6.25"	PLINGER DIAMETER	2.75
MOTOR HP	3.5	PLINGER WALL	.250
MOTOR RPM	1750	MIN. PSI	-
VALVE MODEL	KVP	MAX. PSI	-
PUMP MODEL	20-38	SAFETY MODEL	ECI-A
PUMP GPM	4.33	HOIST CABLE	3/8 8x19
FEED PIPE	1/2	LINE VOLTAGE	208 1Ø
BUFFER CAPACITY	750	CONTROL VOLTAGE	24
BUFFER STROKE	2.25	MOTOR STARTING	55
PLATEN EXT.(X3)	-	MOTOR RUNNING	17
INTERLOCK 01	SM LH 90'	INTERLOCK 02	SM LH 90'



JOB NAME: X528 w/ WOODFOLD 02 36 x 48
 ADDRESS: -
 CITY: -
 ARCHITECT: -
 CONTRACTOR: -
 CUSTOMER: -
 REVISIONS: -
 DRN. BY: DJB DATE: 05/07/01 DWG# 28_3648WF2